

CERTIFIED LAND CORNER RECORDATION

Section 31
T 13 N, R 63 W

1/4
Corner

DESCRIPTION OF CORNER EVIDENCE FOUND, AND ORIGINAL RECORD (If known)

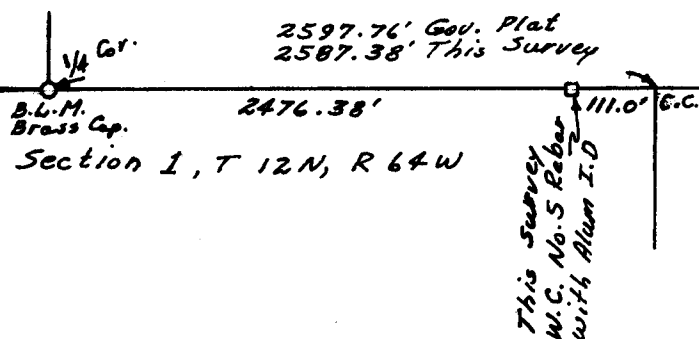
*Found disturbed G.L.O. Brass Cap in roadway embankment.
Disregarded monument as evidence of 1/4 corner location.*

DESCRIPTION OF MONUMENT AND ACCESSORIES ESTABLISHED TO PERPETUATE THE ORIGINAL LOCATION OF THIS CORNER:

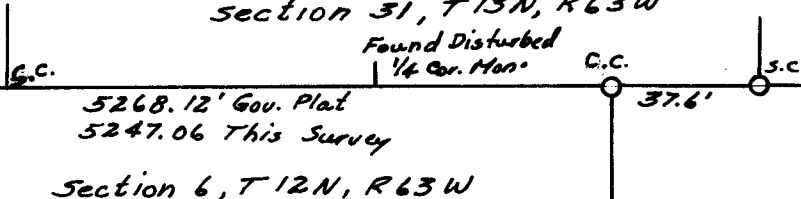
None

SKETCH, WITH COURSE AND DISTANCE TO ADJACENT CORNER IF DETERMINED IN THIS SURVEY.
(May Sketch or Paste Reproduction on Reverse Side.)

Section 36, T 13 N, R 64 W



Section 31, T 13 N, R 63 W



The above two points were found 6" below gravel roadway which is at this time being Asphalt surfaced. Monuments are Rebars with Plastic I.D. Caps L.S. 655

North ↑

I, Edward C. Fry certify that I have carefully performed ~~or reviewed~~ the work done on the diagrammed corner as reported on this recordation form and approve the same.

Edward C. Fry (11-9-78) Wyo. P.E. L.S. 662
Signature of Surveyor Registration No.

STATE OF WYOMING,
Office of Clerk and Recorder,
County of Taramie

507802

This "corner record" was filed for record on the 21 day of November, 1978, was noted on the cross-index plat and is assigned page No. _____, in book No. _____.

Janet C. Whithead
County Official JB

Cross Index No. 2-3 T. 13 R. 6 Mer. _____
_____ T. _____ R. _____ Mer. _____
_____ T. _____ R. _____ Mer. _____
_____ T. _____ R. _____ Mer. _____
_____ T. _____ R. _____ Mer. _____
_____ T. _____ R. _____ Mer. _____

507802

Photographed

Indexed

Posted

Assessor